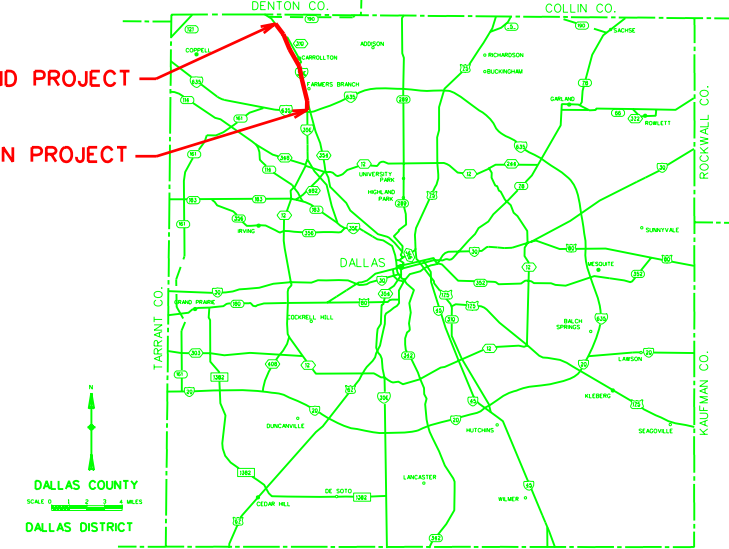


DALLAS DISTRICT
 Design Schematic
 William L. Hale, P.E.
 District Engineer
 IH 35E
 From IH 635
 To US 190
 Sta. 625+00 to Sta. 913+00
 Dallas County
 CSJ: 0196-03-138
 Functional Class.1: Interstate
 Project Length = 5.45 miles

Design Speed:
 Mainlanes 70 mph
 Ramps/Direct Connectors 40 mph
 Frontage Rds 40 mph
 HOV Connectors 40 mph
 Intersecting Sts/Frankford Connectors 30 mph

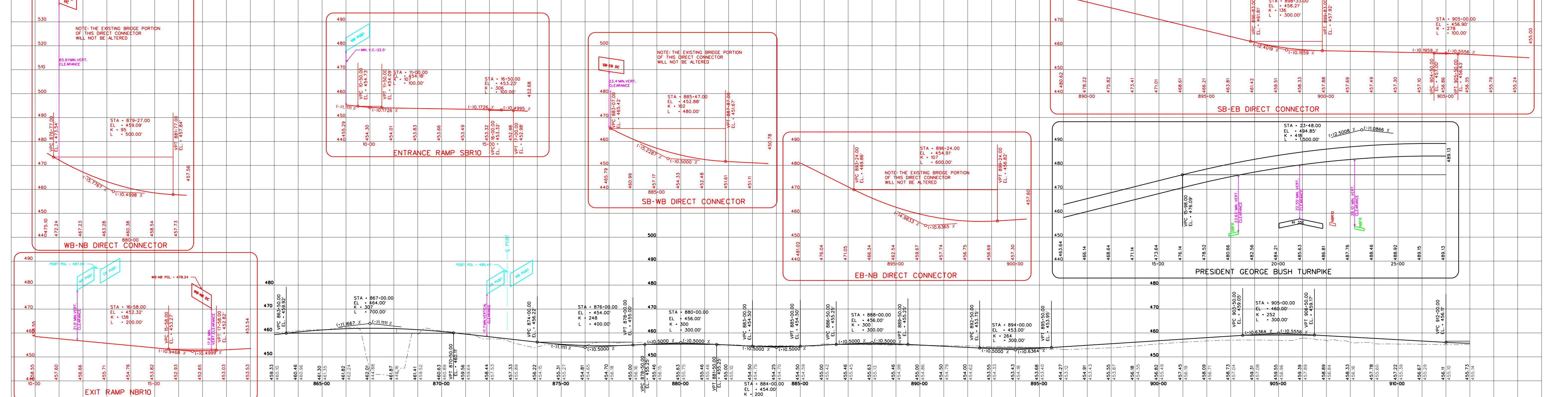
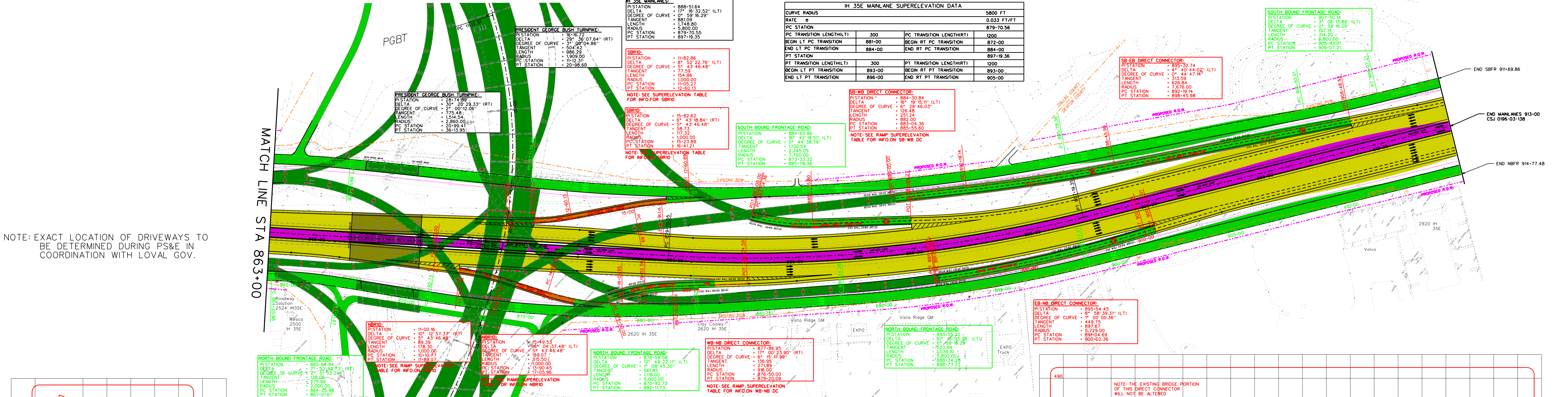


Scale:
 Horizontal 1: 200
 Vertical 1:20

© 2005 by Texas Department of Transportation
 all rights reserved

June 2005

SCHMATIC PREPARED BY:
 TxDOT DALLAS DISTRICT
 Michael A. Ranfow
 PROJECT NUMBER: 75050
 DATE: 06-01-05

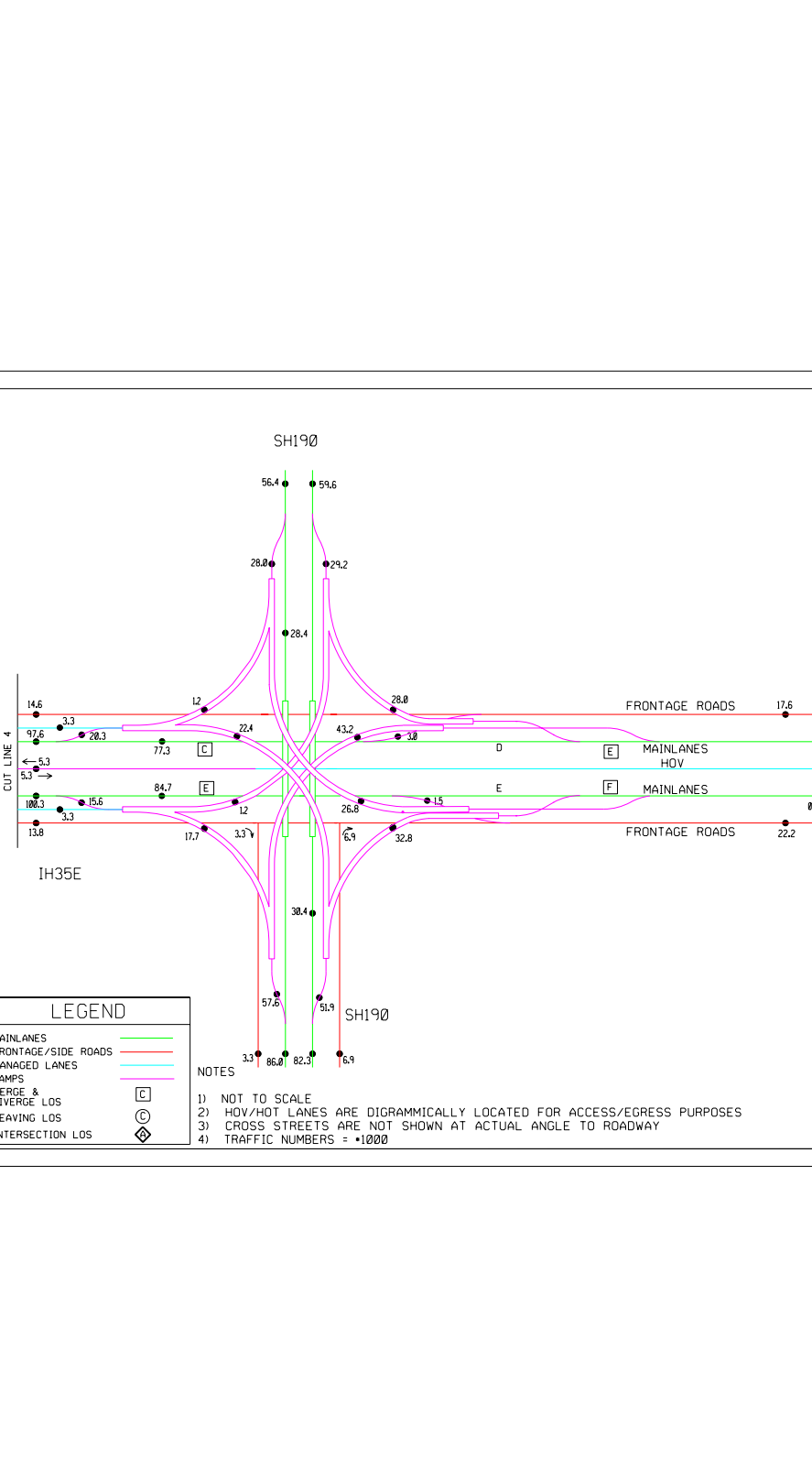


CURVE RADIUS	3000 FT
RATE	0.049 FT/FT
PC STATION	11-05.27
PC TRANSITION LENGTH	120
END PC TRANSITION	11-40.20
PT STATION	12-00.13
PT TRANSITION LENGTH	100
END PT TRANSITION	12-20.00

CURVE RADIUS	3000 FT
RATE	0.049 FT/FT
PC STATION	11-05.27
PC TRANSITION LENGTH	120
END PC TRANSITION	11-40.20
PT STATION	12-00.13
PT TRANSITION LENGTH	100
END PT TRANSITION	12-20.00

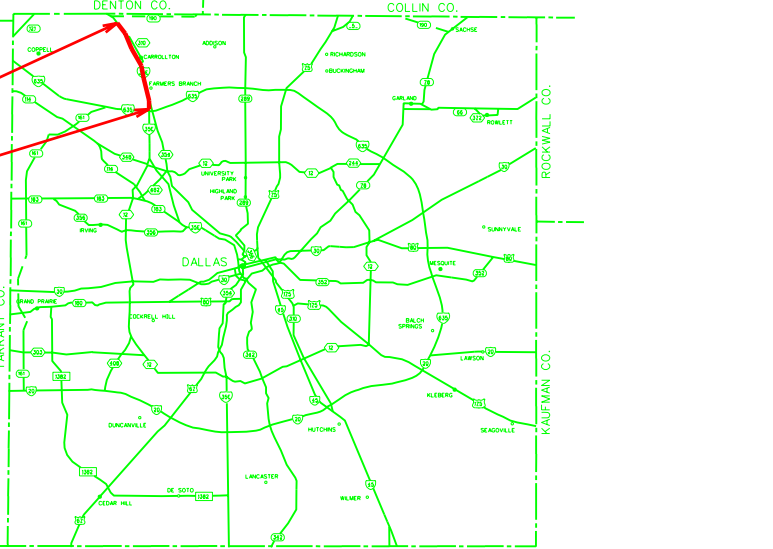
CURVE RADIUS	916 FT
RATE	0.06 FT/FT
PC STATION	876-50
PC TRANSITION LENGTH	180
END PC TRANSITION	875-30
PT STATION	879-23.89
PT TRANSITION LENGTH	80
END PT TRANSITION	878-60

CURVE RADIUS	882 FT
RATE	0.06 FT/FT
PC STATION	883-04.36
PC TRANSITION LENGTH	80
END PC TRANSITION	881-80
PT STATION	885-59.60
PT TRANSITION LENGTH	130
END PT TRANSITION	884-50



DALLAS DISTRICT
 Design Schematic
 William L. Hale, P.E.
 District Engineer
 IH 35E
 From IH 635
 To US 190
 Sta. 625+00 to Sta. 913+00
 Dallas County
 CSJ: 0196-03-138
 Functional Class.1: Interstate
 Project Length = 5.45 miles

Design Speed:
 Mainlanes 70 mph
 Ramps/Direct Connectors 40 mph
 Frontage Rds 40 mph
 HOV Connectors 40 mph
 Intersecting Sts/Frankford Connectors 30 mph



Scale:
 Horizontal 1: 200
 Vertical 1:20

© 2005 by Texas Department of Transportation
 all rights reserved

June 2005

SCHMATIC PREPARED BY:
 TxDOT DALLAS DISTRICT
 Michael A. Ranfow
 PROJECT NUMBER: 75050
 DATE: 06-01-05