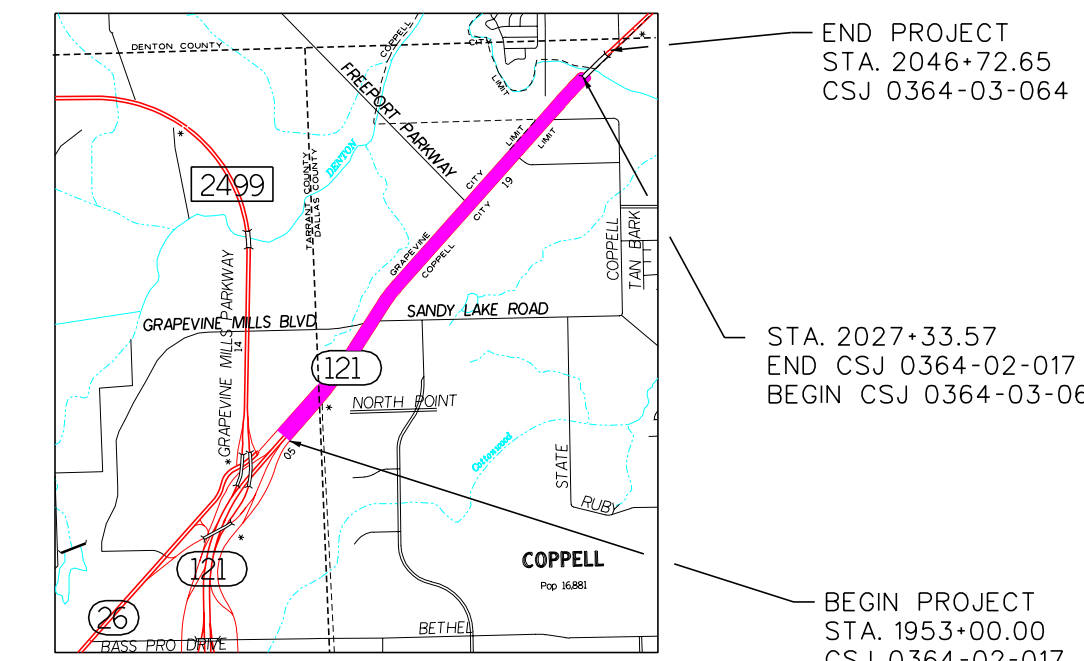


DALLAS DISTRICT  
Design Schematic  
William L. Hale, P.E.  
District Engineer

SH 121  
From: FM 2499  
To: Denton Creek

Dallas County  
CSJ: 0364-02-017  
CSJ: 0364-03-064  
Functional Class: Urban Freeway  
Project Length: 1.94 Miles  
Design Speed: Mainlanes 70 mph  
Ramps 50 mph  
Frontage Rds 40 mph  
Cross Streets 30 mph  
Average Daily Traffic 2005 - 2025  
= 130,500 - 243,500



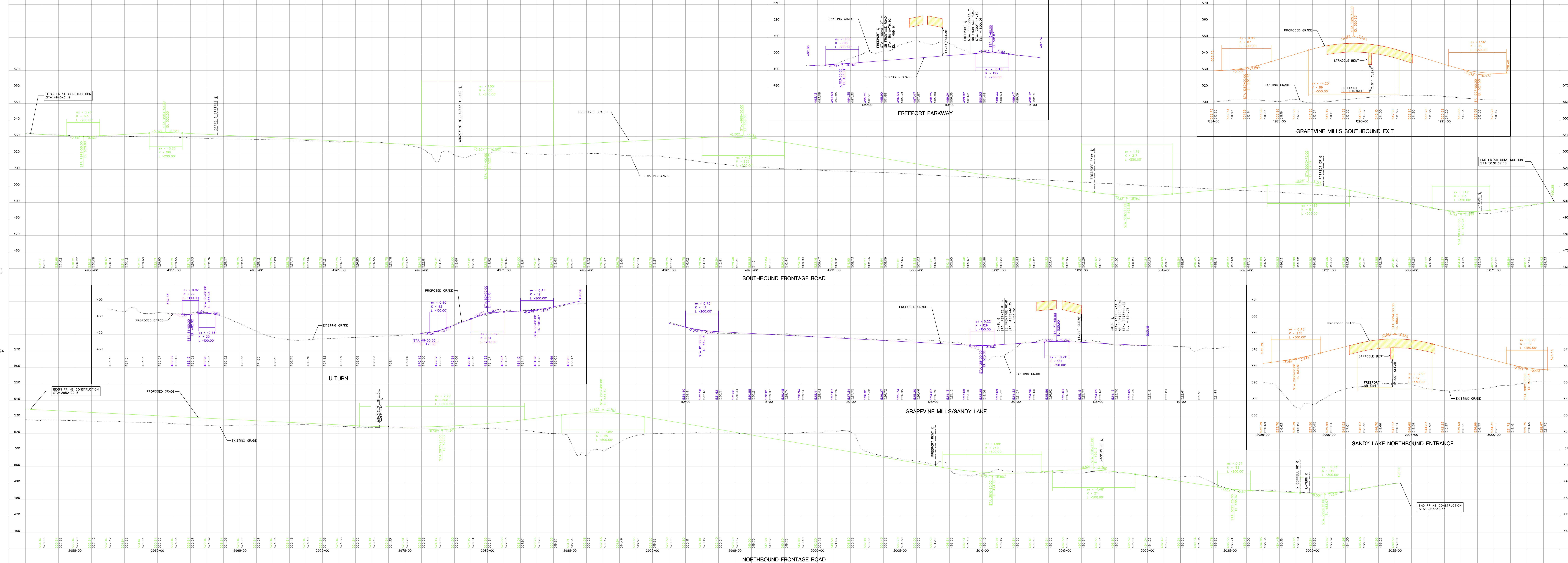
Scale:  
Horizontal 1:200  
Vertical 1:20

© 2005 by Texas Department of Transportation  
all rights reserved

October 2005  
Roll 3 of 3

SCHEMATIC PREPARED BY:  
PHILLIP WAYNE ULLMAN  
PROJECT MANAGER  
714226 October 13, 2005  
P.L. NUMBER DATE

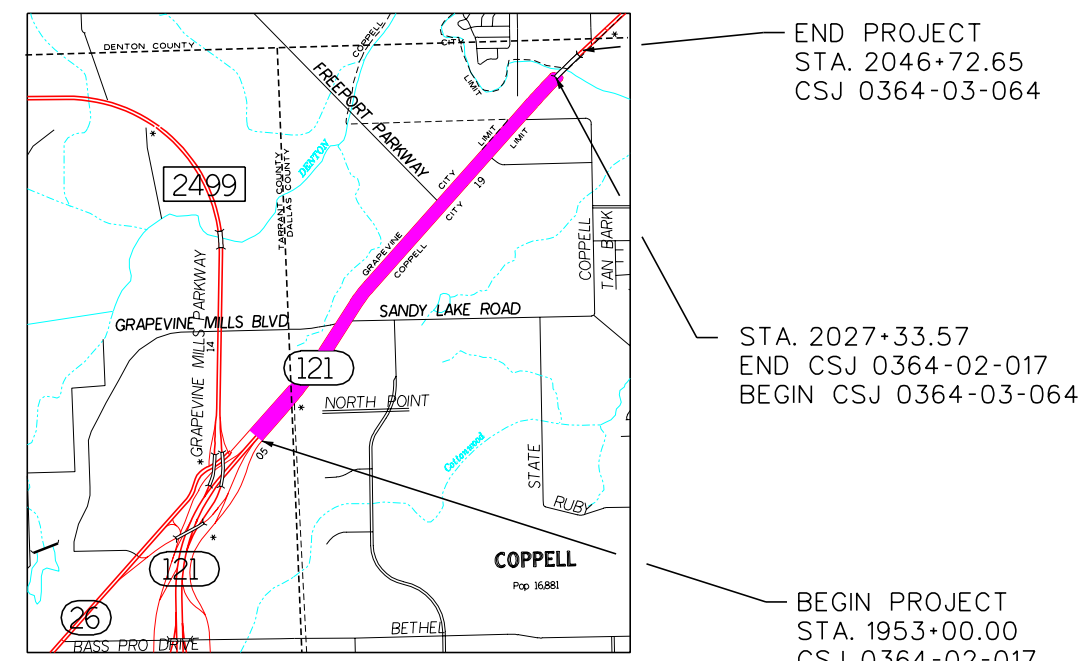
NOT INTENDED FOR  
CONSTRUCTION,  
BIDDING, OR  
PERMIT PURPOSES



DALLAS DISTRICT  
Design Schematic  
William L. Hale, P.E.  
District Engineer

SH 121  
From: FM 2499  
To: Denton Creek

Dallas County  
CSJ: 0364-02-017  
CSJ: 0364-03-064  
Functional Class: Urban Freeway  
Project Length: 1.94 Miles  
Design Speed: Mainlanes 70 mph  
Ramps 50 mph  
Frontage Rds 40 mph  
Cross Streets 30 mph  
Average Daily Traffic 2005 - 2025  
= 130,500 - 243,500



Scale:  
Horizontal 1:200  
Vertical 1:20

© 2005 by Texas Department of Transportation  
all rights reserved

October 2005  
Roll 3 of 3

SCHEMATIC PREPARED BY:  
PHILLIP WAYNE ULLMAN  
PROJECT MANAGER  
714226 October 13, 2005  
P.L. NUMBER DATE

NOT INTENDED FOR  
CONSTRUCTION,  
BIDDING, OR  
PERMIT PURPOSES