

DALLAS DISTRICT  
WILLIAM L. HALE, P.E. DISTRICT ENGINEER

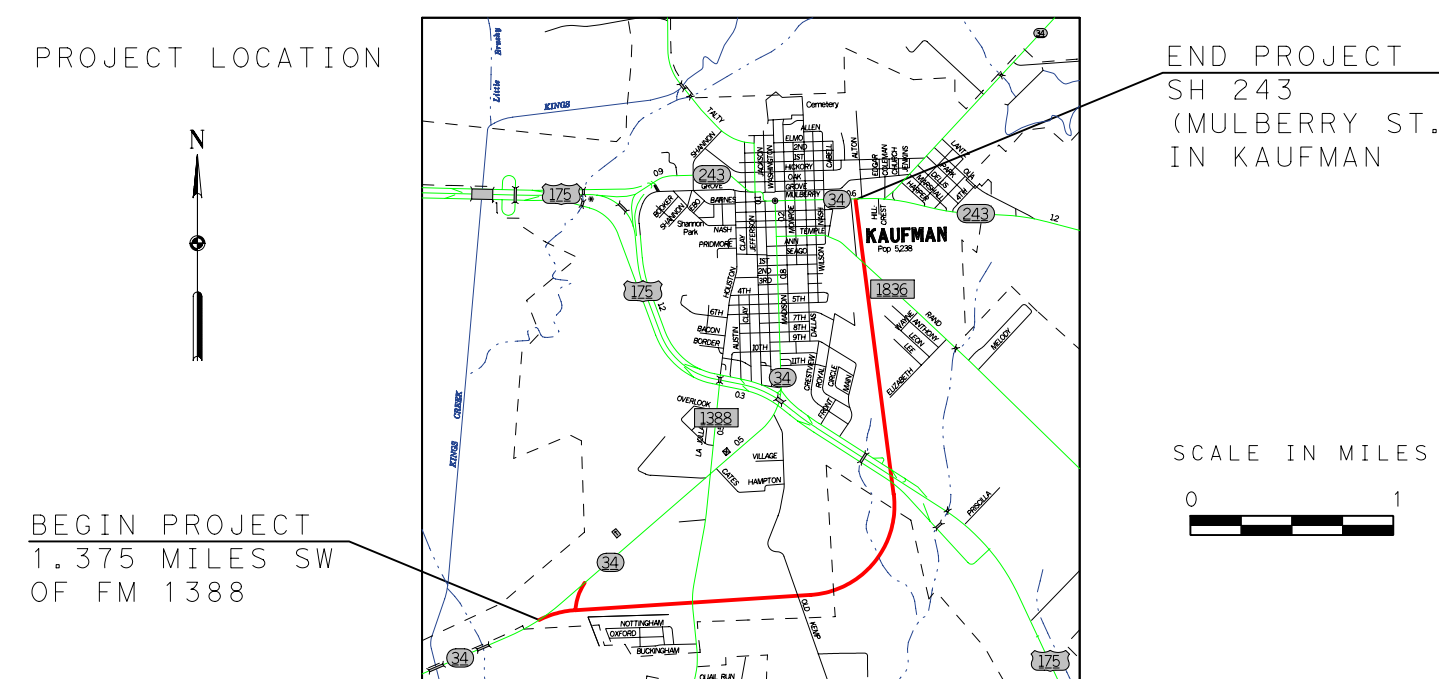
DESIGN SCHEMATIC  
KAUFMAN COUNTY

STATE HIGHWAY 34

FROM 1.375 MILES SOUTHWEST OF FM 1388  
TO SH 243 (MULBERRY ST.) IN KAUFMAN

CSJ: 0173-03-015 AND CSJ: 0173-03-029

MINOR URBAN ARTERIAL  
PROJECT LENGTH = 3.5 MILES  
DESIGN SPEED = 45 MPH



PREPARED BY CHIANG, PATEL & YERBY, INC.  
UNDER THE SUPERVISION OF:

**CP&Y** Chiang, Patel & Yerby, Inc.

KARA K. HUFFMAN, P.E.

SERIAL NO. 88525

DATE: \_\_\_\_\_

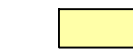
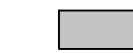


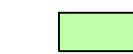
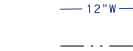


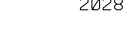
0 100 200  
HORIZONTAL OCTOBER 2005

0 10 20  
VERTICAL ROLL 6 OF 7  
SCALE IN FEET

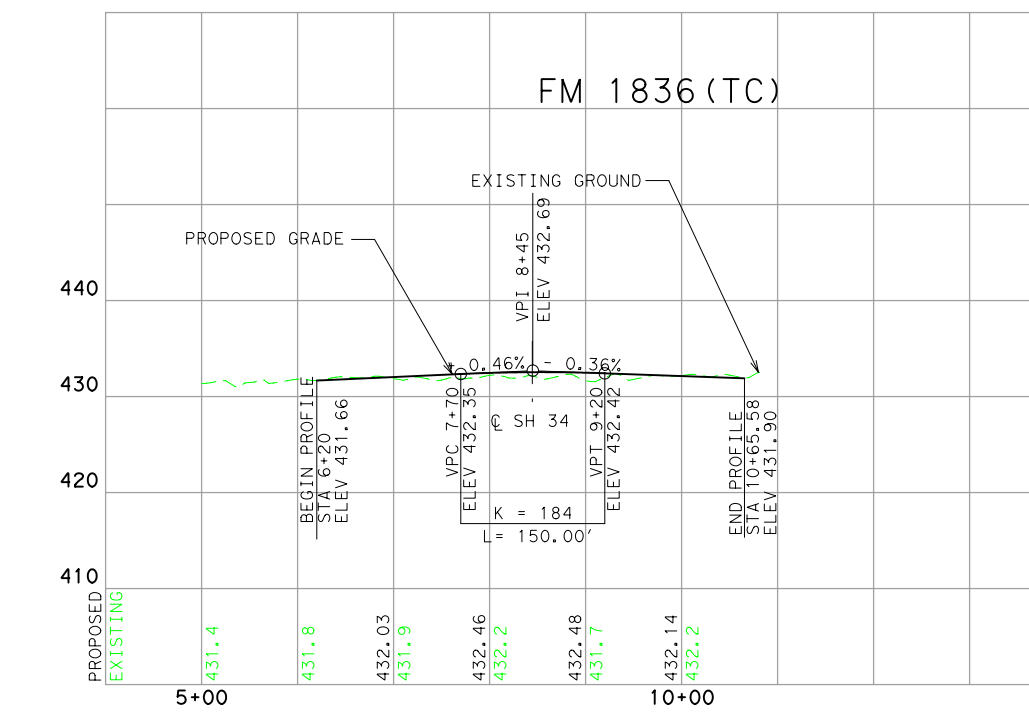
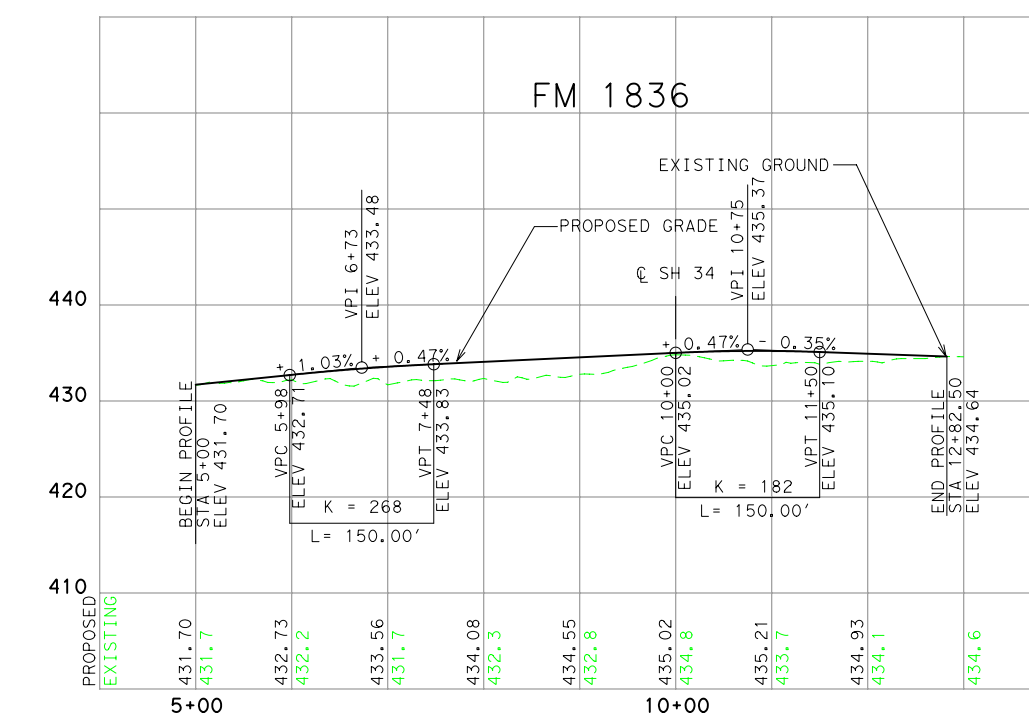
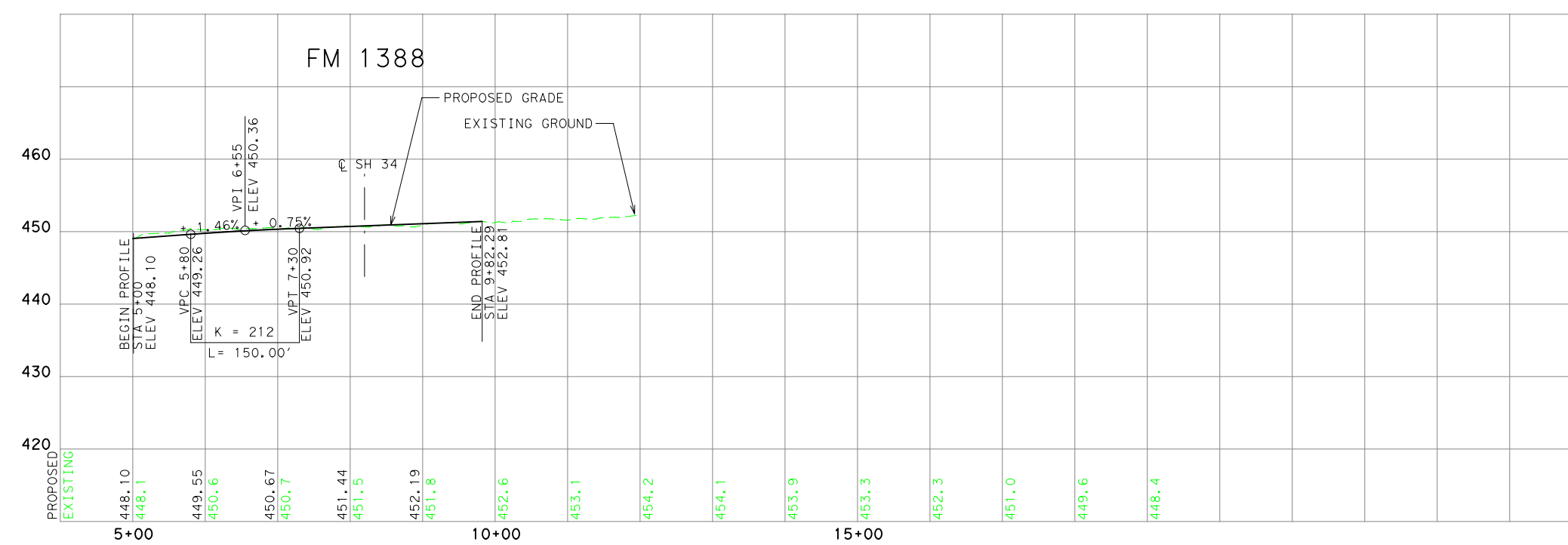
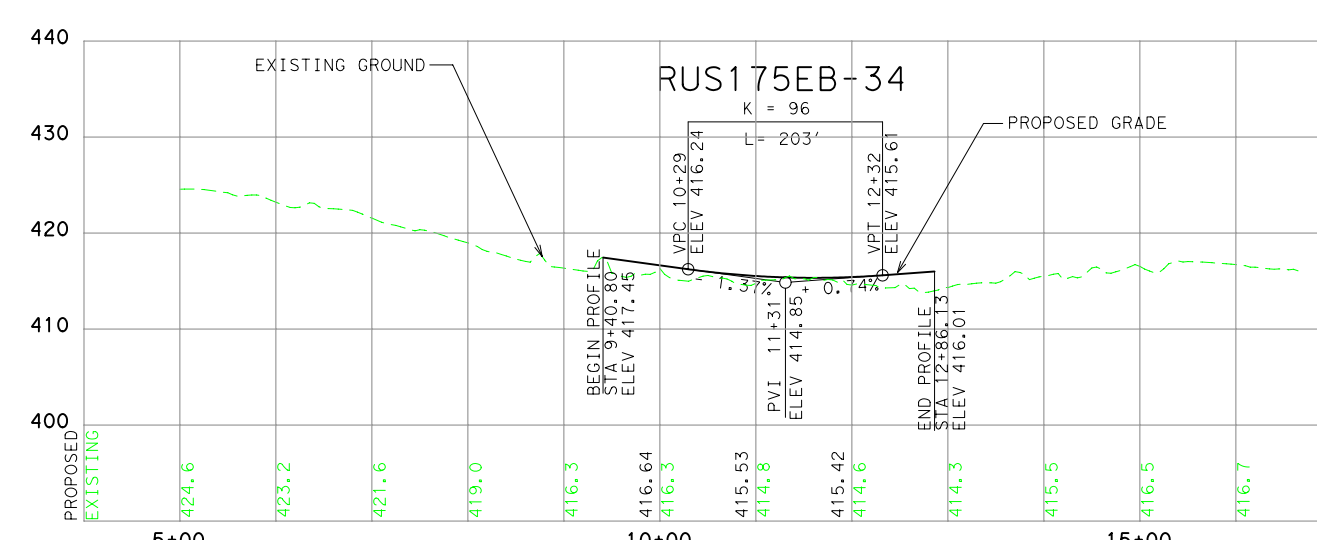
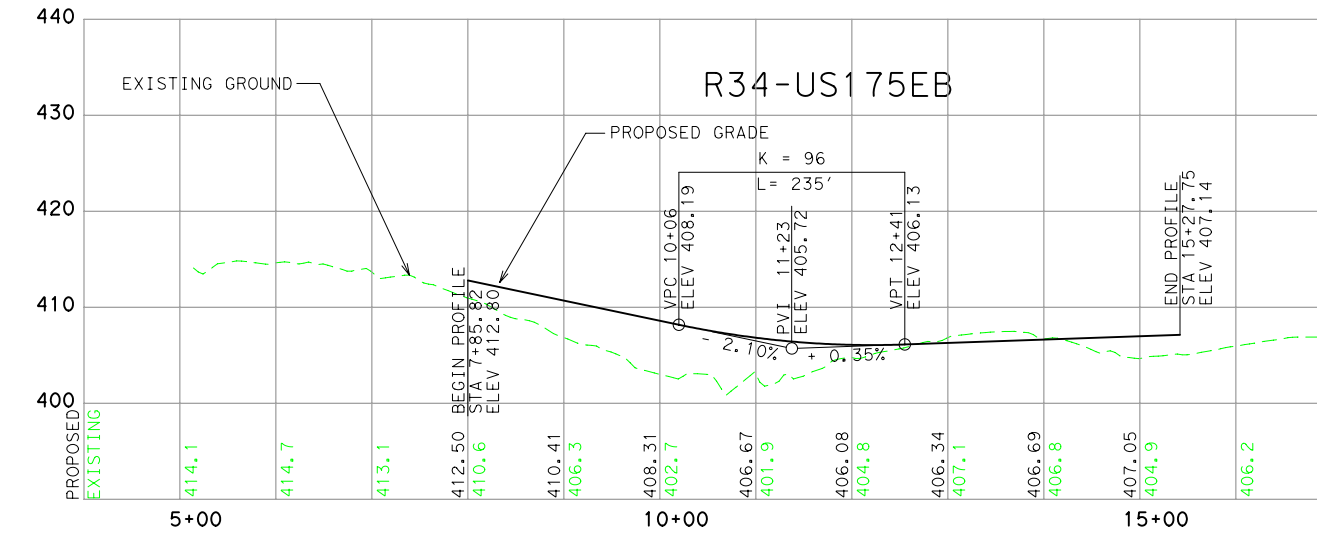
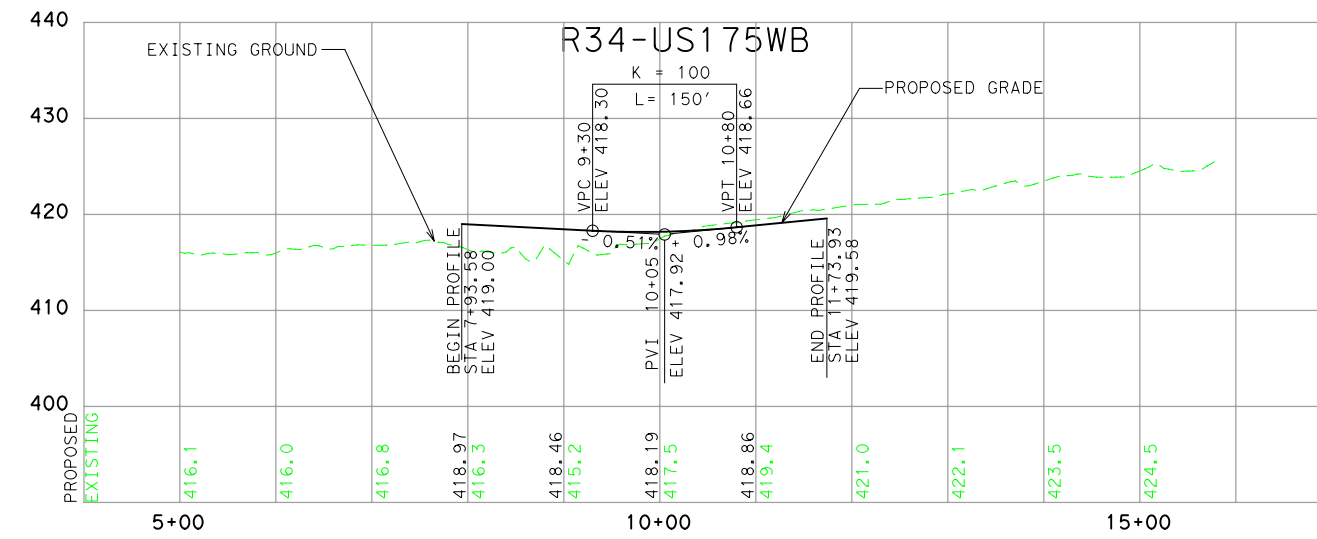
NOTES:

- EXISTING ROW IS APPROXIMATE AND BASED ON AERIAL PHOTOGRAPHS, TOPOGRAPHICAL INFORMATION, AND ABSTRACT MAPS.
- DRIVEWAY AND MEDIAN OPENING LOCATIONS TO BE DETERMINED IN PS&E IN COORDINATION WITH THE CITY.
- DESIGN BASED ON NAD83 COORDINATES
- THE INFORMATION SHOWN ON THIS DRAWING CONCERNING TYPE AND LOCATION OF EXISTING UTILITIES IS NOT GUARANTEED TO BE ACCURATE OR ALL INCLUSIVE. LOCATIONS OF ALL EXISTING UTILITIES SHOWN ARE APPROXIMATE AND SHOULD BE FIELD VERIFIED PRIOR TO CONSTRUCTION.

LEGEND:

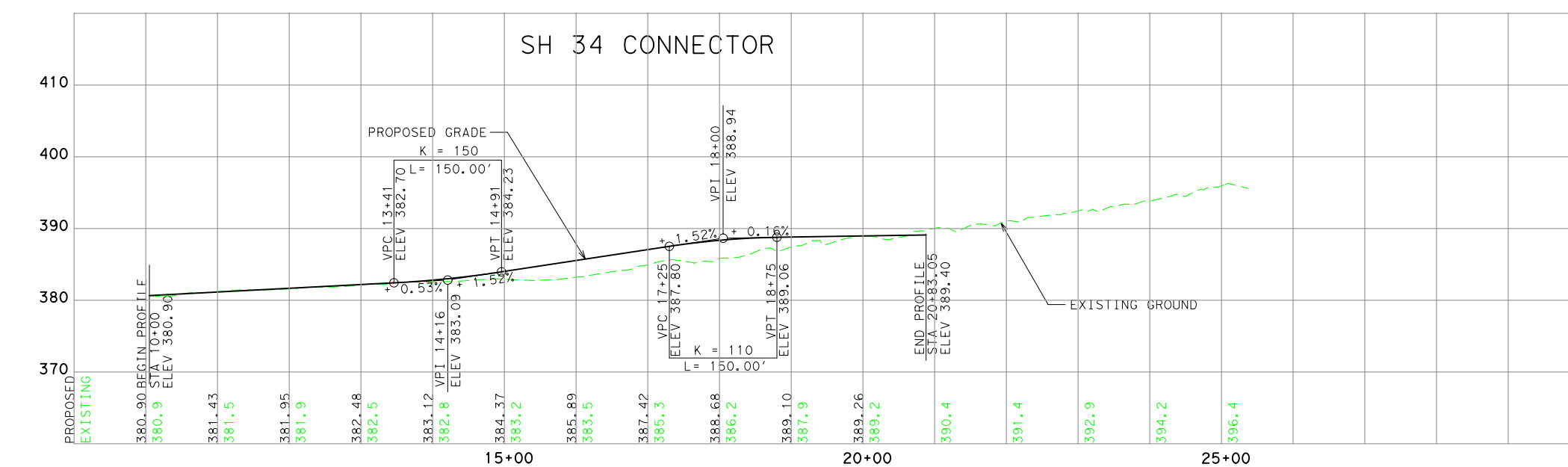
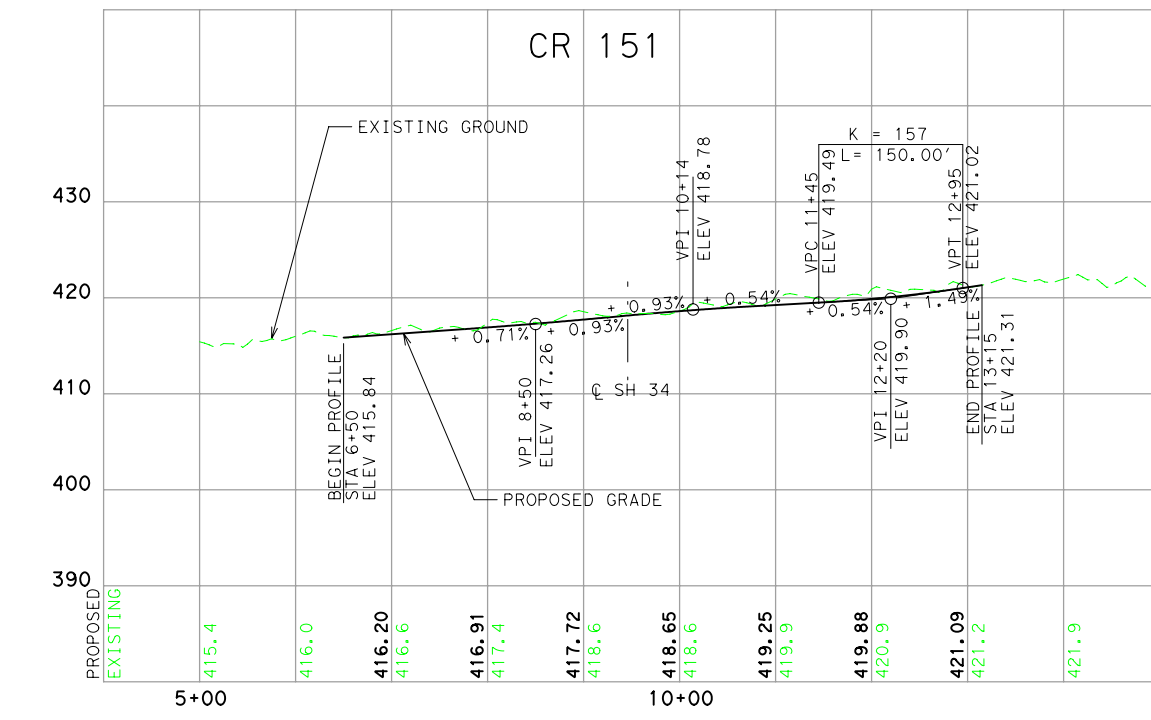
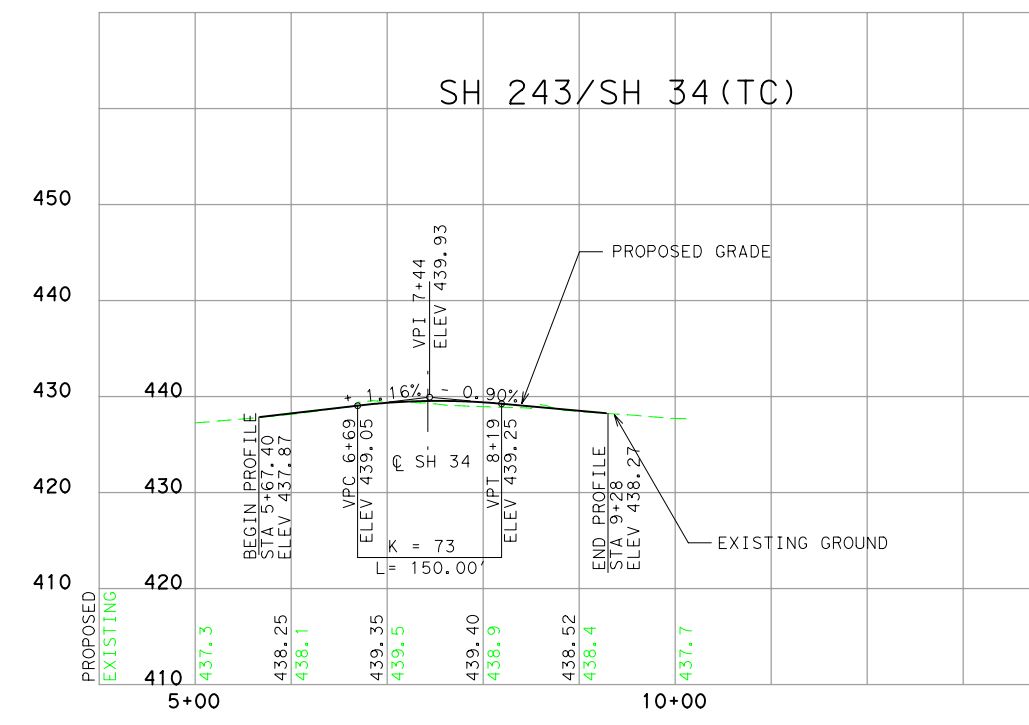
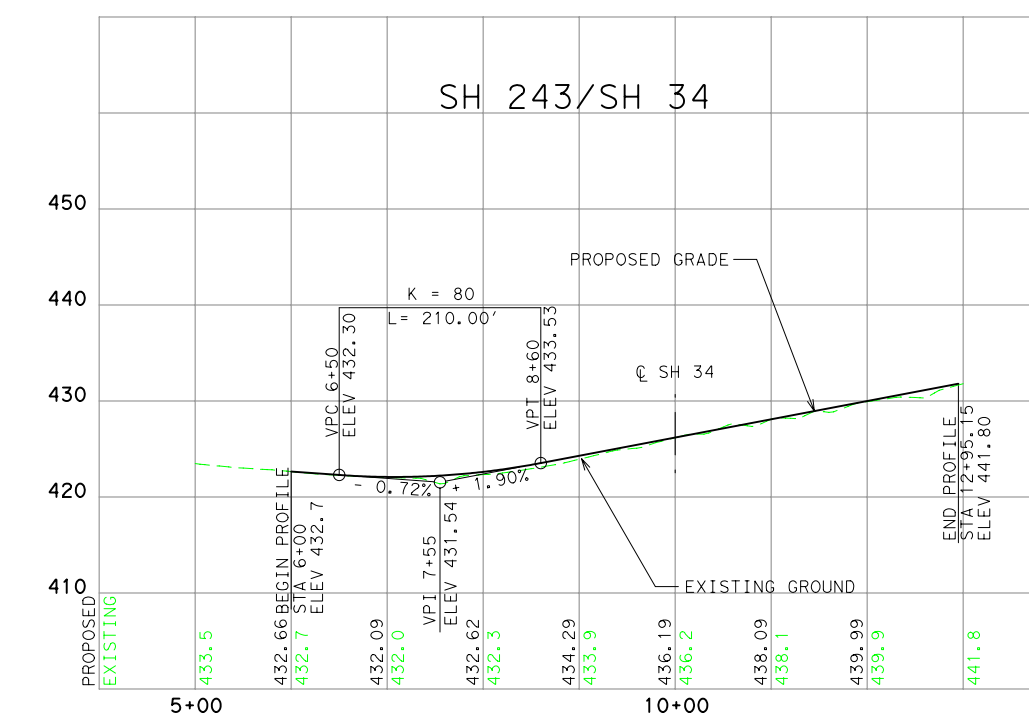
-  PROPOSED STATE HIGHWAY 34 PAVING (MAINLINES, TURN LANS, INTERSECTIONS, RAMP AND CONNECTORS)
-  PROPOSED STATE HIGHWAY 34 MEDIAN
-  PROPOSED STATE HIGHWAY 34 BRIDGE STRUCTURE
-  PROPOSED ABANDONMENT OF EXISTING PAVEMENTS
-  EXISTING MAJOR STATE HIGHWAY FRONTAGE ROAD OR INTERSTATE
-  EXISTING UTILITIES (APPROX.)
-  EXISTING RIGHT OF WAY (APPROX.)
-  PROPOSED RIGHT OF WAY
-  PROPOSED CENTERLINE

2008 AND 2028 ANTICIPATED AVERAGE DAILY TRAFFIC VOLUMES AND TURNING MOVEMENTS FOR SH 34 RELOCATION KAUFMAN COUNTY. TRAFFIC VOLUMES PROVIDED BY TYP AUSTIN, (DECEMBER 4, 2003)



PROPOSED ALIGNMENT

TEMPORARY CONNECTION



DALLAS DISTRICT  
WILLIAM L. HALE, P.E. DISTRICT ENGINEER

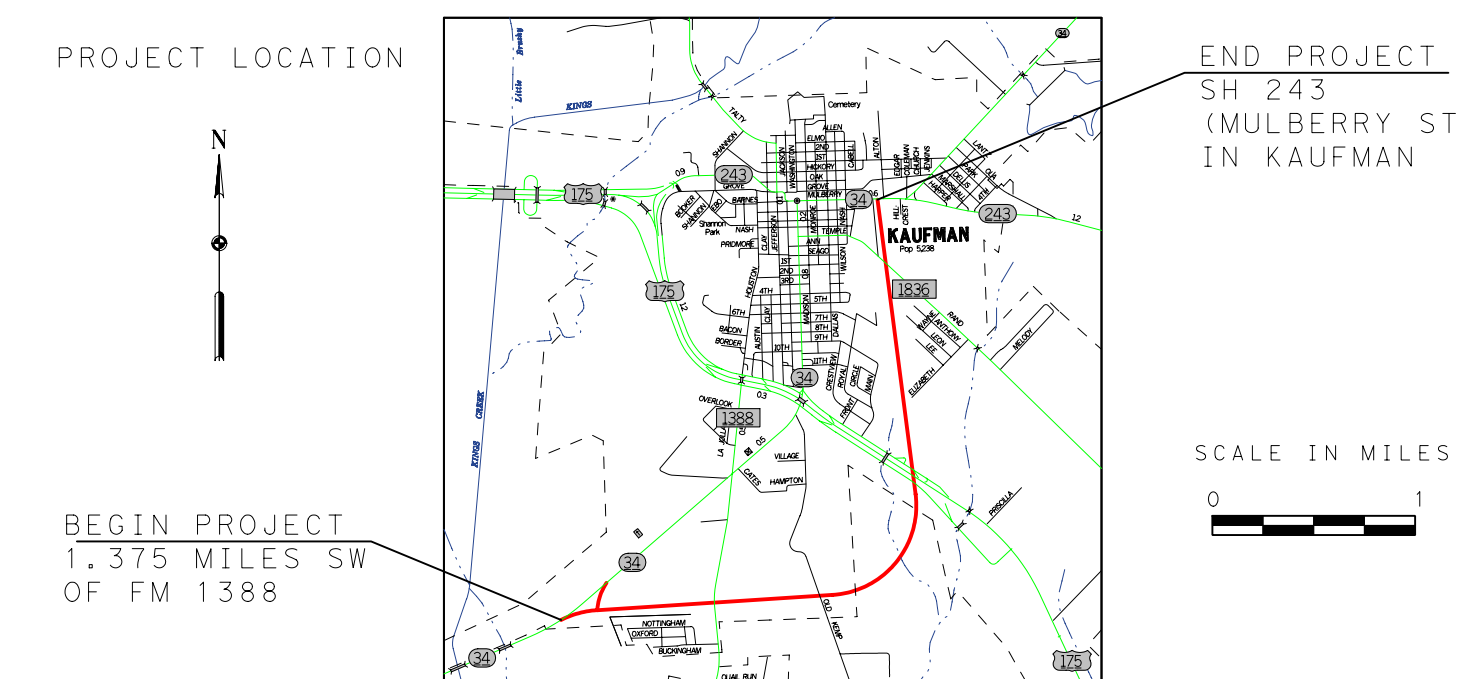
DESIGN SCHEMATIC  
KAUFMAN COUNTY

STATE HIGHWAY 34

FROM 1.375 MILES SOUTHWEST OF FM 1388  
TO SH 243 (MULBERRY ST.) IN KAUFMAN

CSJ: 0173-03-015 AND CSJ: 0173-03-029

MINOR URBAN ARTERIAL  
PROJECT LENGTH = 3.5 MILES  
DESIGN SPEED = 45 MPH



PREPARED BY CHIANG, PATEL & YERBY, INC.  
UNDER THE SUPERVISION OF:

**CP&Y** Chiang, Patel & Yerby, Inc.

KARA K. HUFFMAN, P.E.

SERIAL NO. 88525

DATE: \_\_\_\_\_

0 100 200  
HORIZONTAL OCTOBER 2005

0 10 20  
VERTICAL ROLL 6 OF 7  
SCALE IN FEET