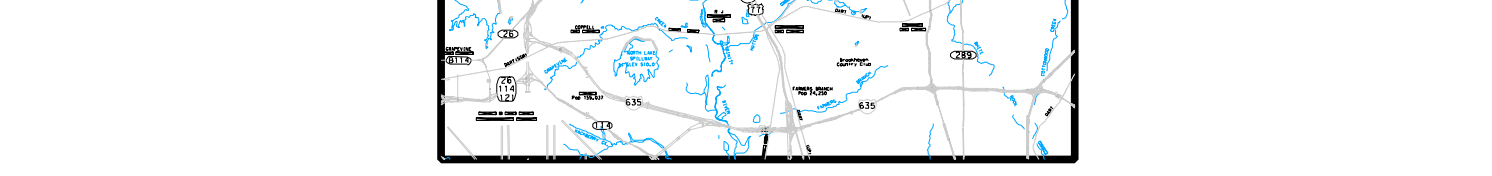
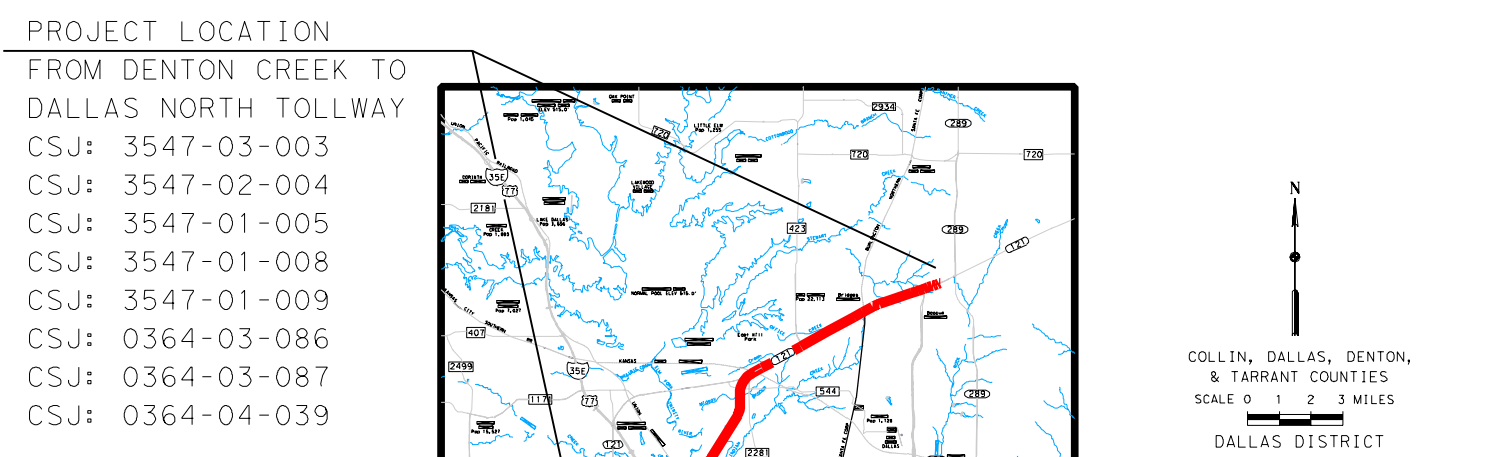


CONCEPTUAL TOLL PLAN
SH 121
DENTON, DALLAS AND COLLIN COUNTIES

SH 121:
FROM DENTON CREEK TO WEST OF DALLAS NORTH TOLLWAY
CSJ: 3547-03-003 CSJ: 3547-02-004
CSJ: 3547-01-005 CSJ: 3547-01-008
CSJ: 3547-01-009 CSJ: 0364-03-086
CSJ: 0364-03-087 CSJ: 0364-04-039

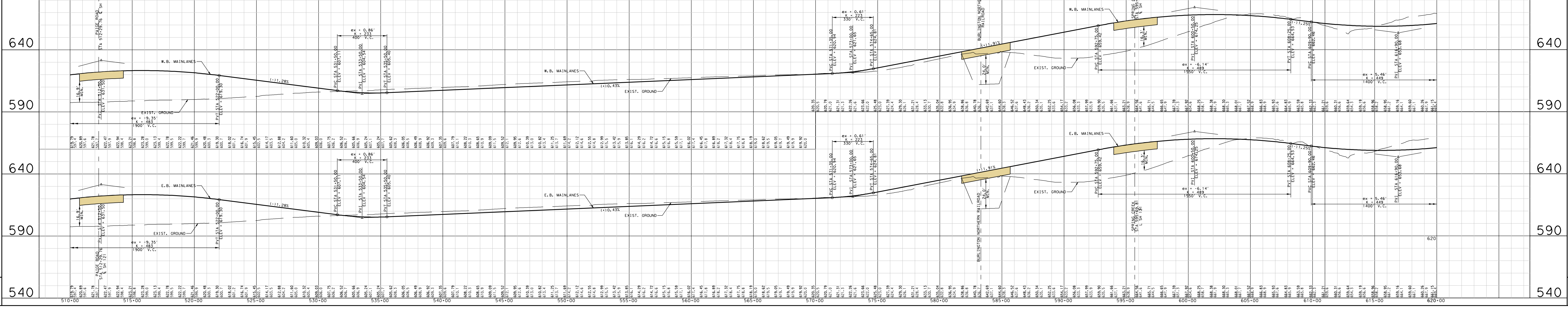
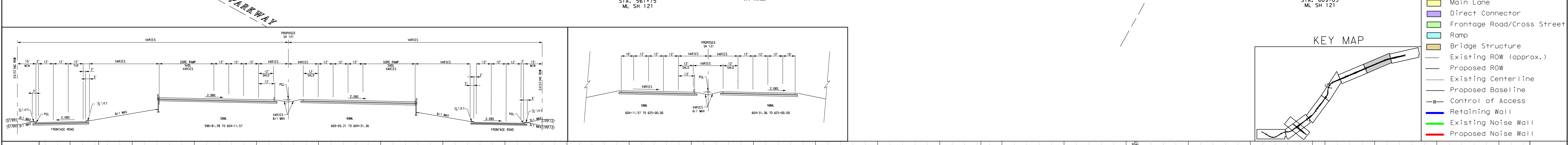
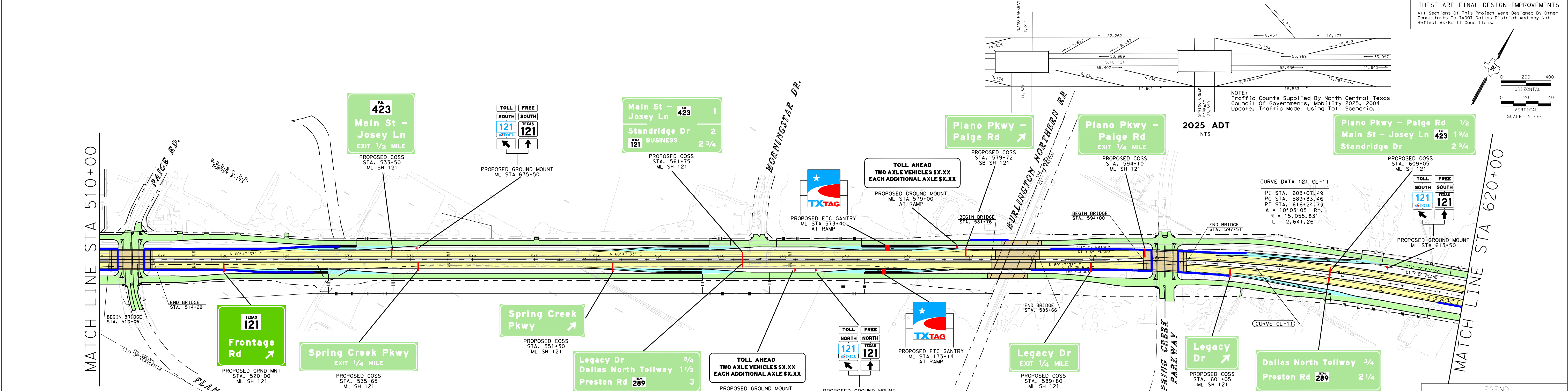
PROJECT LENGTH= 13.4 MILES
DESIGN SPEED
MAINLANES - 70 MPH - BASED ON URBAN INTERSTATE FREEWAY
RAMPS - 50 MPH - BASED ON MID RANGE
DIRECT CONNECTORS - 50 MPH - BASED ON MID RANGE
FRONTAGE ROADS - 45 MPH
CROSS STREETS - 45 MPH (30 MPH WHERE NOTED)

HIGHWAY CLASSIFICATION
URBAN FREEWAY



NAME SERIAL NO. XXXXX DATE: _____
REVIEWED BY AZB: C. J. SHARKUS, P.E.
SERIAL NO. 59627 DATE: _____
DATE APPROVED: _____ DATE SUBMITTED: _____
NOT INTENDED FOR CONSTRUCTION, BIDDING OR PERMIT PURPOSES.

TABLE OF CONTENTS:
ROLLS
PLAN/PROFILE 1-8
TRAFFIC VOLUMES 1-8
LARGE SIGNS 1-8
AUGUST 2005
ROLL 6 OF 8

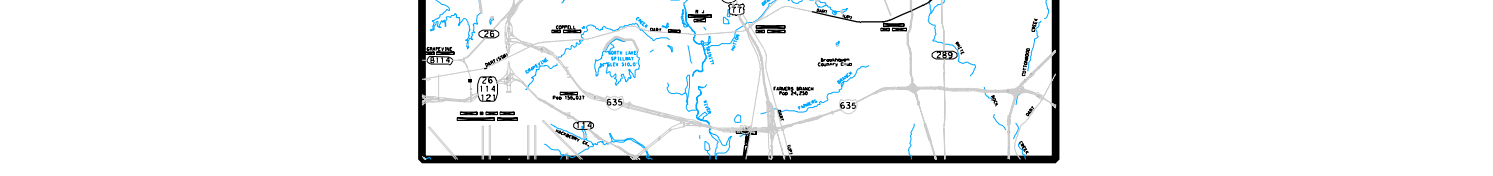
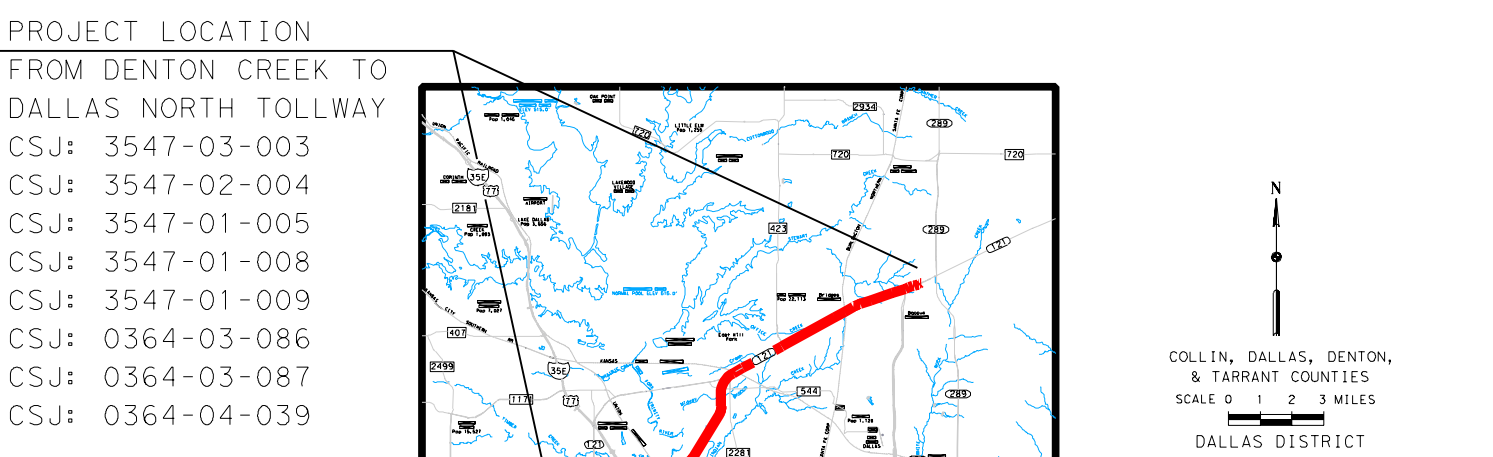


CONCEPTUAL TOLL PLAN
SH 121
DENTON, DALLAS AND COLLIN COUNTIES

SH 121:
FROM DENTON CREEK TO WEST OF DALLAS NORTH TOLLWAY
CSJ: 3547-03-003 CSJ: 3547-02-004
CSJ: 3547-01-005 CSJ: 3547-01-008
CSJ: 3547-01-009 CSJ: 0364-03-086
CSJ: 0364-03-087 CSJ: 0364-04-039

PROJECT LENGTH= 13.4 MILES
DESIGN SPEED
MAINLANES - 70 MPH - BASED ON URBAN INTERSTATE FREEWAY
RAMPS - 50 MPH - BASED ON MID RANGE
DIRECT CONNECTORS - 50 MPH - BASED ON MID RANGE
FRONTAGE ROADS - 45 MPH
CROSS STREETS - 45 MPH (30 MPH WHERE NOTED)

HIGHWAY CLASSIFICATION
URBAN FREEWAY



NAME SERIAL NO. XXXXX DATE: _____
REVIEWED BY AZB: C. J. SHARKUS, P.E.
SERIAL NO. 59627 DATE: _____
DATE APPROVED: _____ DATE SUBMITTED: _____
NOT INTENDED FOR CONSTRUCTION, BIDDING OR PERMIT PURPOSES.

TABLE OF CONTENTS:
ROLLS
PLAN/PROFILE 1-8
TRAFFIC VOLUMES 1-8
LARGE SIGNS 1-8
AUGUST 2005
ROLL 6 OF 8