

VICINITY MAP

**SH 121 FROM HARDEE BLVD TO SH 3 GEOMETRIC DESIGN CRITERIA**

SECTION	LENGTH (STATIONING)	DESIGN SPEED (MPH)	DESIGN LANE WIDTH (FT)	DESIGN TRUCK LANE WIDTH (FT)	DESIGN CLEARANCE (FT)	DESIGN GRADE (%)	DESIGN RADIUS (FT)	DESIGN SUPERELEVATION (%)	DESIGN CURB RADIUS (FT)
SECTION 1	0+00 TO 0+100	55	12	10	14	0.5	500	2.5	10
SECTION 2	0+100 TO 0+200	55	12	10	14	0.5	500	2.5	10
SECTION 3	0+200 TO 0+300	55	12	10	14	0.5	500	2.5	10
SECTION 4	0+300 TO 0+400	55	12	10	14	0.5	500	2.5	10
SECTION 5	0+400 TO 0+500	55	12	10	14	0.5	500	2.5	10
SECTION 6	0+500 TO 0+600	55	12	10	14	0.5	500	2.5	10
SECTION 7	0+600 TO 0+700	55	12	10	14	0.5	500	2.5	10
SECTION 8	0+700 TO 0+800	55	12	10	14	0.5	500	2.5	10
SECTION 9	0+800 TO 0+900	55	12	10	14	0.5	500	2.5	10
SECTION 10	0+900 TO 1+000	55	12	10	14	0.5	500	2.5	10

**DESIGN SCHEMATIC**

SH 121 & US 75 INTERCHANGE

US 75

CSJ 0364-04-040

DALLAS DISTRICT

COLLIN COUNTY

SHEET 4 OF 4

**KBR**

Engineer of Record

**NOT A BIDDING DOCUMENT**

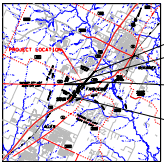
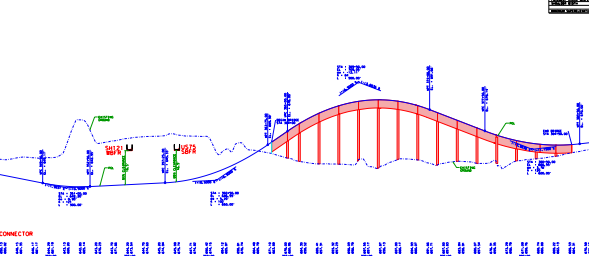
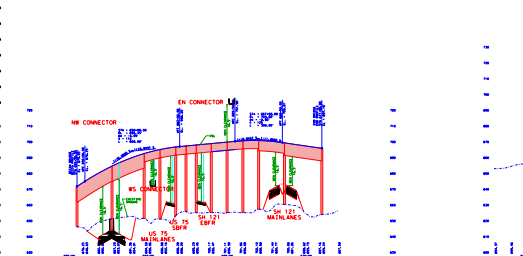
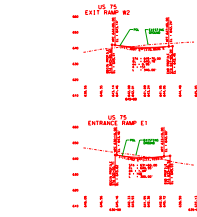
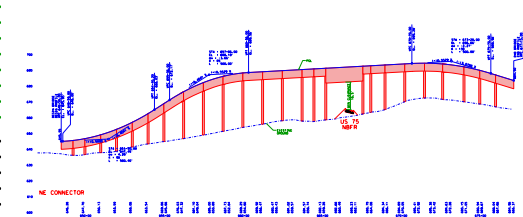
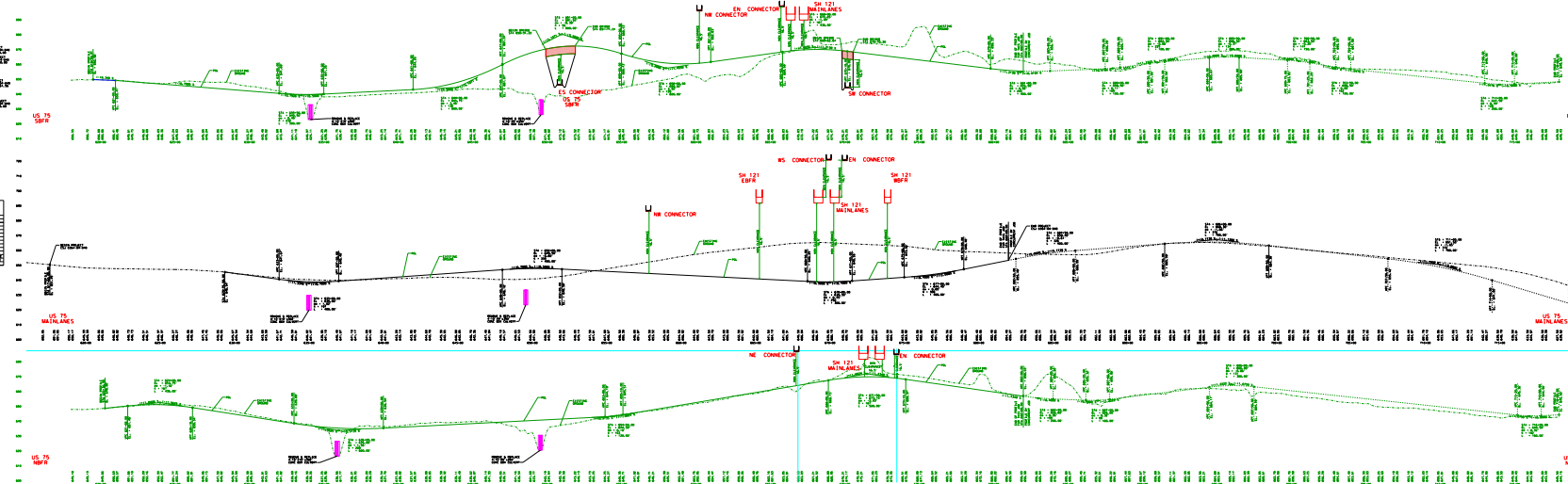
AMPHIS JENNINGS & ASSOCIATES

56700

08-03-2025

**REVISION**

NO.	DESCRIPTION	DATE



VICINITY MAP

**SH 121 FROM HARDEE BLVD TO SH 3 GEOMETRIC DESIGN CRITERIA**

SECTION	LENGTH (STATIONING)	DESIGN SPEED (MPH)	DESIGN LANE WIDTH (FT)	DESIGN TRUCK LANE WIDTH (FT)	DESIGN CLEARANCE (FT)	DESIGN GRADE (%)	DESIGN RADIUS (FT)	DESIGN SUPERELEVATION (%)	DESIGN CURB RADIUS (FT)
SECTION 1	0+00 TO 0+100	55	12	10	14	0.5	500	2.5	10
SECTION 2	0+100 TO 0+200	55	12	10	14	0.5	500	2.5	10
SECTION 3	0+200 TO 0+300	55	12	10	14	0.5	500	2.5	10
SECTION 4	0+300 TO 0+400	55	12	10	14	0.5	500	2.5	10
SECTION 5	0+400 TO 0+500	55	12	10	14	0.5	500	2.5	10
SECTION 6	0+500 TO 0+600	55	12	10	14	0.5	500	2.5	10
SECTION 7	0+600 TO 0+700	55	12	10	14	0.5	500	2.5	10
SECTION 8	0+700 TO 0+800	55	12	10	14	0.5	500	2.5	10
SECTION 9	0+800 TO 0+900	55	12	10	14	0.5	500	2.5	10
SECTION 10	0+900 TO 1+000	55	12	10	14	0.5	500	2.5	10

**DESIGN SCHEMATIC**

SH 121 & US 75 INTERCHANGE

US 75

CSJ 0364-04-040

DALLAS DISTRICT

COLLIN COUNTY

SHEET 4 OF 4

**KBR**

Engineer of Record

**NOT A BIDDING DOCUMENT**

AMPHIS JENNINGS & ASSOCIATES

56700

08-03-2025

**REVISION**

NO.	DESCRIPTION	DATE

